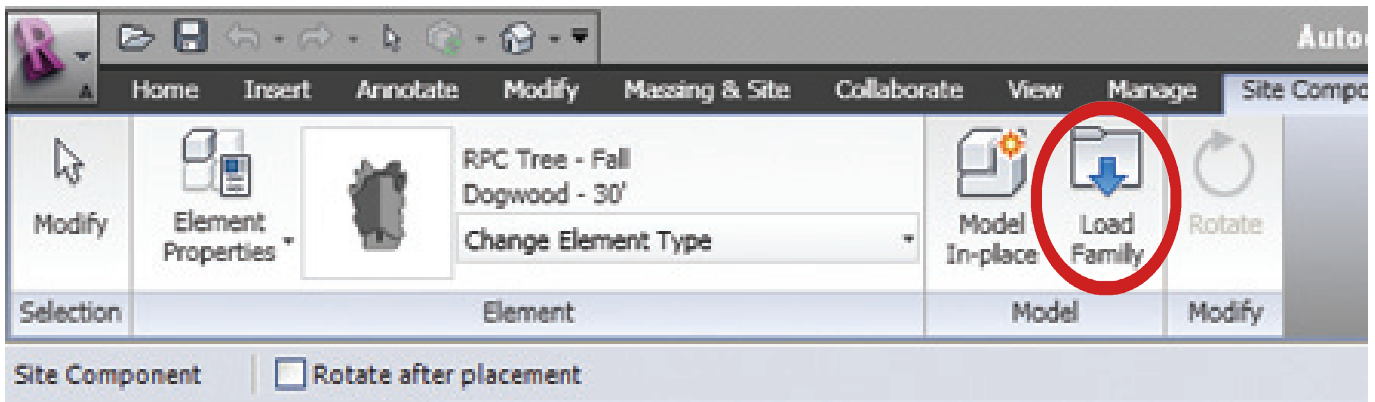


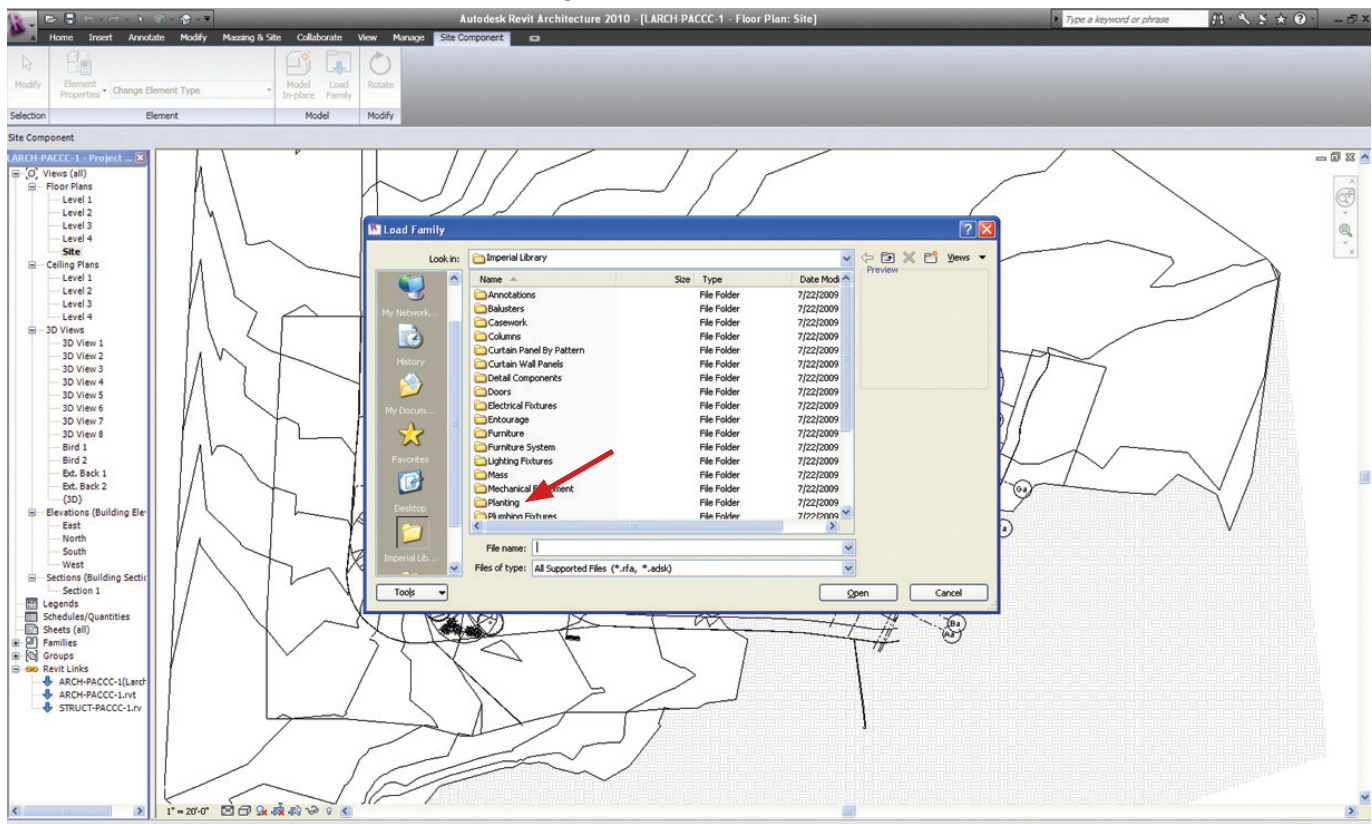
Quick Guide to Using Components in REVIT

ABSTRACT: Using components in models. Explanation includes importing components to current model from the internet, changing component size and appearance and making multiple sizes of one component for frequent uses.

1. Begin in the REVIT model in which the work is to be done. As always be certain the the proper level is selected.
2. In the “Massing and Site” tab select the Site Component option. This will replace the menu with new options like the ones below. This provides the opportunity to chose the de-sired component.

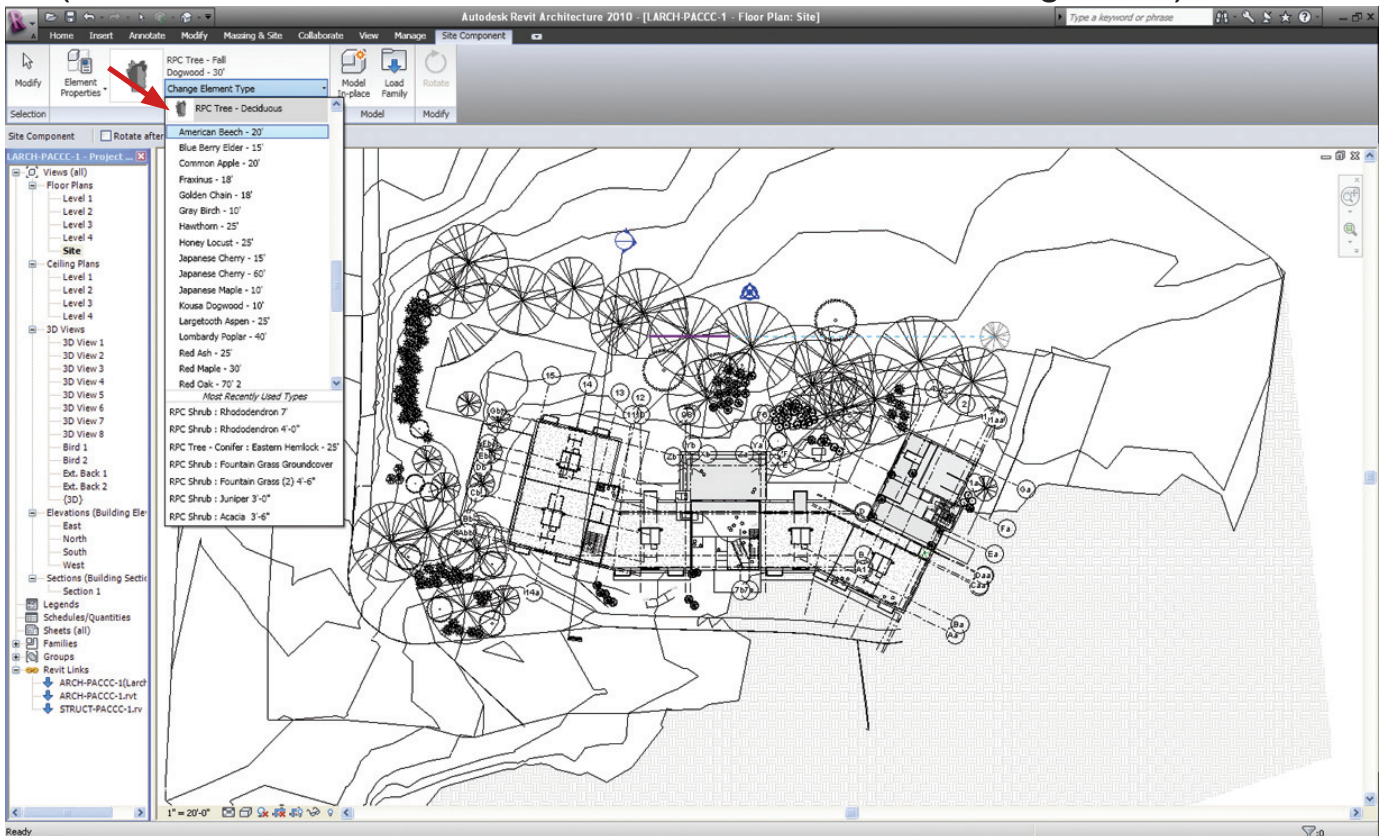


3. In order to have access to the correct component family, that family often must be load-ed. To do so left click the “Load Family” icon.



4. Select the family that includes the desired component (if a ceiling light then lighting fixtures-ceiling light would be appropriate; for an oak tree, planting-deciduous) Once select-ed left click “Open.”

5. In the Pull down Menu which reads “Change Element Type” you new family should appear. (In this case “Tree - Deciduous” were selected from the “Planting” folder)

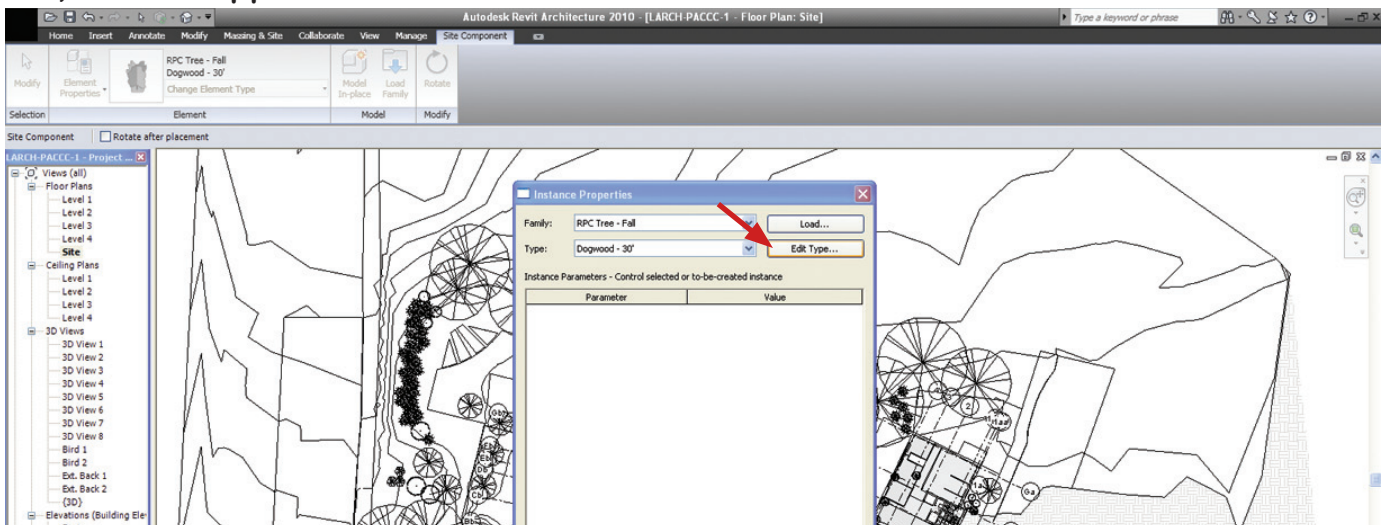


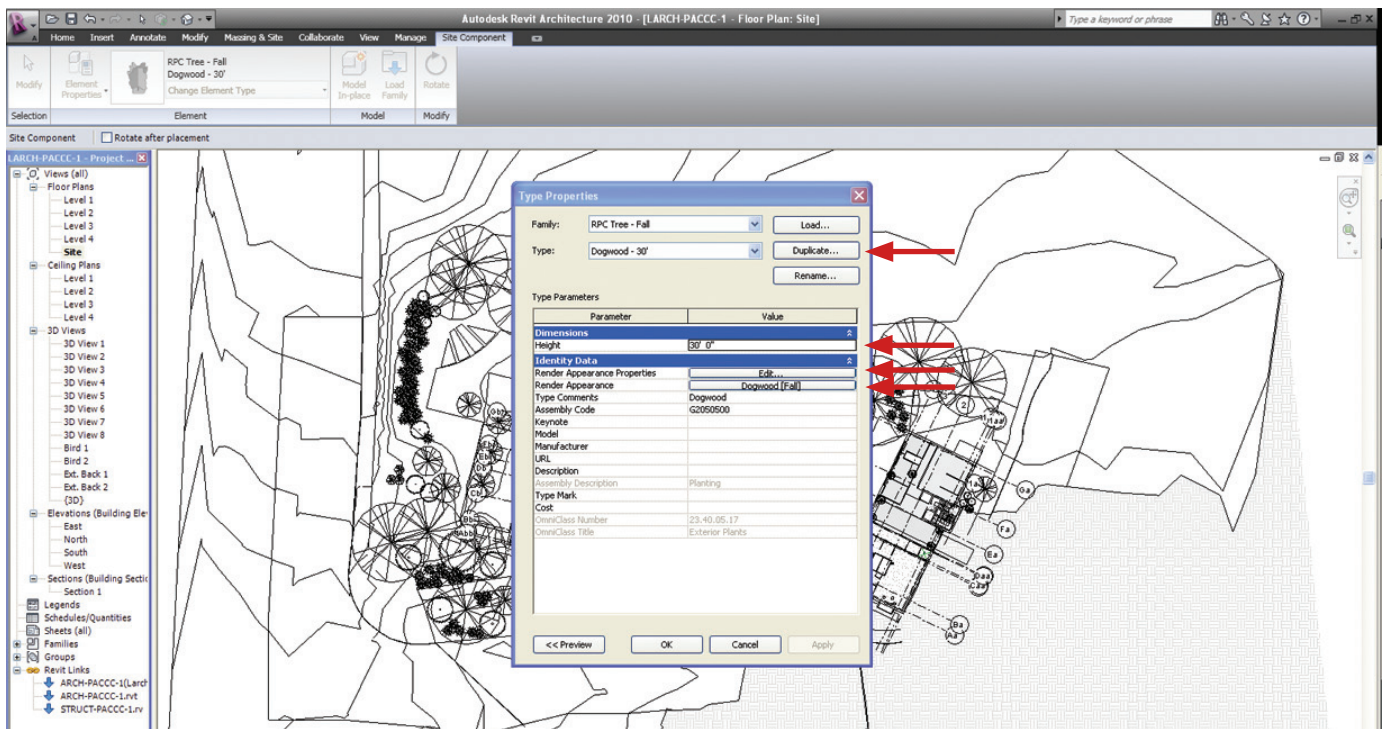
6. The option is now available to select the component. Simply click and place. Again, be certain that the proper Floor Plan is selected.

7. Should the component be the incorrect size or graphic it can be altered. If the component has not been placed simply left click the “Element Properties” icon. If the Component is already in the model Click the “Modify” icon, select the component in the model the left click “Element Properties.”



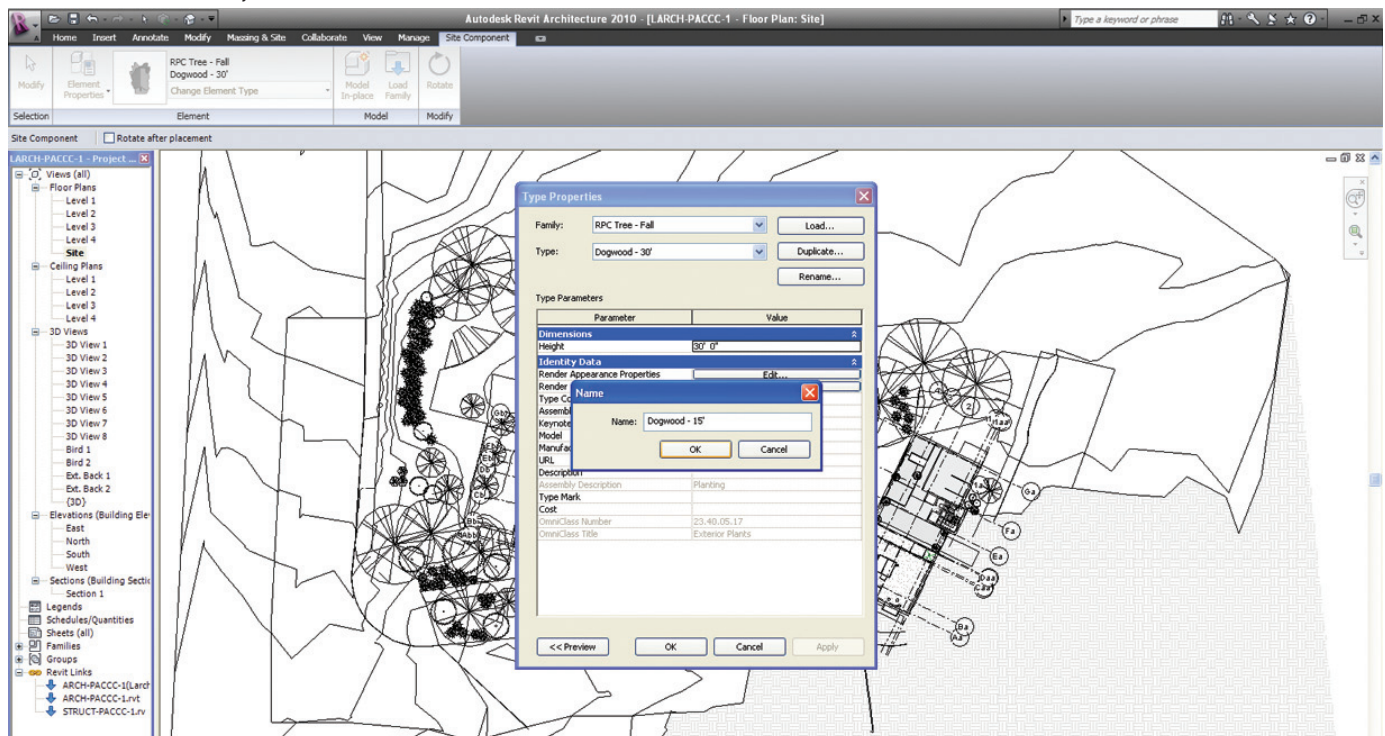
8. Left click “Edit Type.” This will bring up the “Type Properties” window. From here the name, size and appearance can be altered.





9. Here the Height, Render Appearance and Render Appearance Properties (size, visual in render and whether the visual has shadows and is viewed from what direction) can be altered.

10. Often it is beneficial to duplicate the component and make the edits on a copy; do so by left clicking the “Duplicate” button and choosing a name for the copy. (A name that states the edit made is most helpful i.e. if the copy 15' versus the originals 30' that would be good to note in the name.)



11. Left click “OK”

13. The Component is ready to be placed in the model